

**THE CARBON CATTLE COMPANY©**  
**2222 BOYT ROAD**  
**YATESVILLE, GEORGIA 31097**  
[DAVID@CARBONCATTLECOMPANY.COM](mailto:DAVID@CARBONCATTLECOMPANY.COM)

**PH: 478-319-7278**

**TIMBER FRAME CONSTRUCTION**

We were contracted to supply timbers for and assemble the interior timber framing of a 42'x80' two-story house. The owner had the main floor and exterior walls in place and ready for us to begin our assembly. The columns were 8" square, the rafters were 3"x9" and the ridge beams were 4"x12"x30'.

Because the timbers were solid wood, not composite, it required trees of premium quality and we had to buy the trees individually from the loggers. We selected the trees for the project and were able to watch some of them be cut and loaded.

The timbers were custom sawn and air dried. The entire project was hand cut and assembled on site, there was no prefabrication. We used steel brackets and notching to hold the frame together.



A 30' timber takes a very big tree.







Custom milling and air drying.

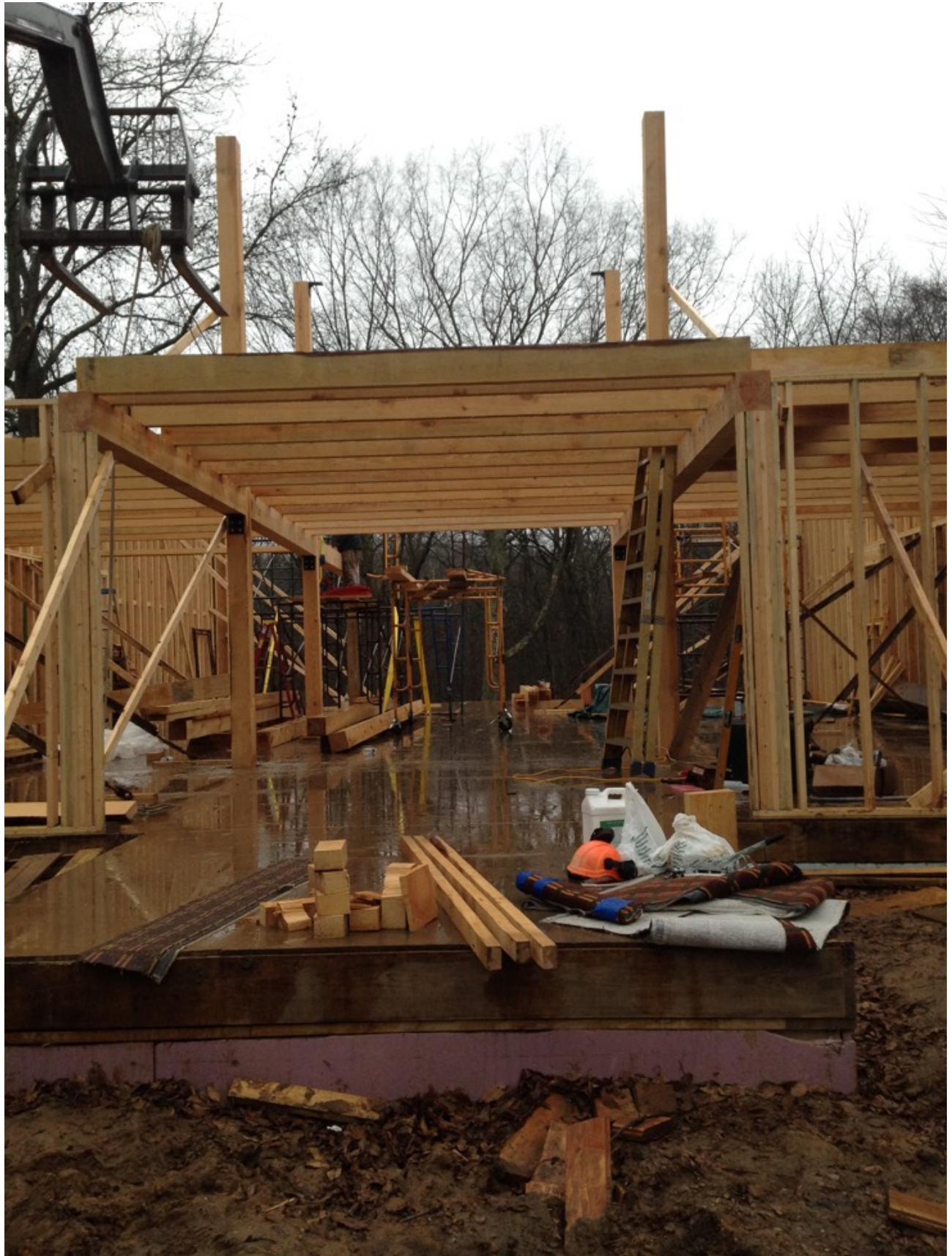




Cutting and assembling one piece at a time.













Getting it just right.





Ready for the roof covering. The owner used SIP panels custom made for the structure.

